



*Sophisticated features for print output as well
as for creating PDF-, PostScript- or EPS-files*

Print smarter from within Adobe InDesign CS

MadeToPrint *for Adobe InDesign CS*

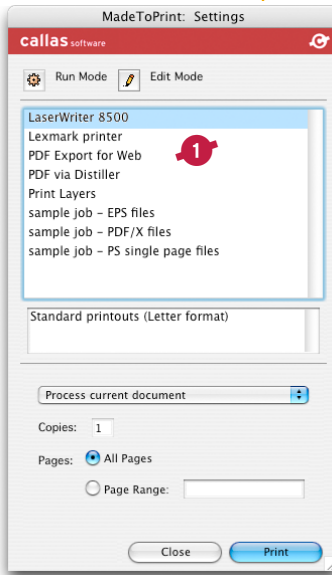
New features:
Batch processing and preflighting,
output of layer combinations,
PDF output with
Acrobat Distiller.

Print smarter...

Features of MadeToPrint:

- Batch processing (NEW)
- create PDF by addressing Acrobat Distiller (NEW)
- output layers and layer combinations (NEW)
- execute Scripts (NEW)
- process several jobs with a single mouse click
- process single pages
- dynamic file and print job naming
- Infobar with dynamically generated information
- PostScript Expert options

MadeToPrint is a Plug-In that optimizes print output as well as the creation of PDF, EPS and PostScript files and minimizes mistakes in repetitive jobs. Aside from saving standard print settings, MadeToPrint includes several practical features to ensure an efficient and safe production environment.

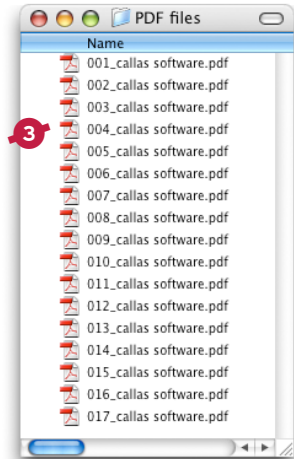


1 **Print settings can be saved** in a profile and applied to the current document from a list at the push of a button.

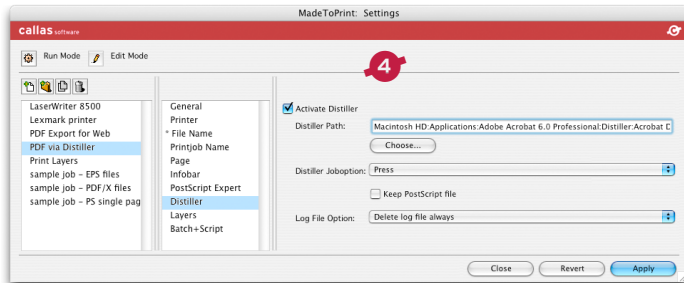
2 For outputting PDF-, PostScript or EPS-files, detailed **rules for dynamic file name and target directory creation** can be specified. Based on these rules, MadeToPrint InDesign is able to detect current information like date, document side or user name while processing.

3 To prepare documents e.g. for imposition workflows it is often necessary to **process single pages**. Preparing a

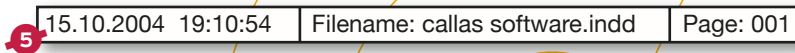
PDF or PostScript file repeatedly for each individual page is time consuming and error-prone. MadeToPrint makes this a breeze.



4 To create PDF files within Adobe InDesign, MadeToPrint now directly addresses the Acrobat Distiller too, thus enabling users to set up and save even detailed job options, all of which can very easily be activated afterwards.



5 An optional **Infobar** at the top of every printed page shows pertinent information such as document status, organization or personal reference. The required information (date, time, filename, page, etc.) is obtained from variable fields during printout.



6 MadeTo Print InDesign supports layer management. In order to produce, for example, one layout in different languages at a time, **layers and layer combinations can be printed** very easily.

7 The new **batch processing options** save time and money when it comes to the output of larger numbers of documents. All it takes is one mouseclick. This option allows for the processing of complete directories in one production stage, while checking documents for missing fonts and pictures at the same time.

Also check out
MadeToPrint for:

- Adobe Acrobat
- QuarkXPress

System requirements:

Adobe InDesign CS

Mac OS X, Windows 2000 or XP

Pricing:

Single user license: 349,- US\$ / EUR

5 user license: 1.399,- US\$ / EUR

10 user license: 2.499,- US\$ / EUR

(All above prices do not include any sales tax).



Schönhauser Allee 6-7
D-10119 Berlin (Germany)
Tel +49-30.4439031-0
Fax +49-30.4416402
info@callassoftware.com
www.callassoftware.com



Where to buy:

The PowerXChange | Wheat Ridge (USA) | Phone +1.303.940.0600 (Toll-free)
sales@thepowerxchange.com | www.ThePowerXChange.com

XCite International | BN Deventer (Netherlands) | Phone +31.570.627 878
germen@xcite.nl | www.xcite-international.com

Caslon IT A/S | Højbjerg (Denmark) | Phone +45 8747 1638 | info@caslon.dk
www.caslon.dk

XChange International | London (UK) | Phone +44.20.7490 4455 |
info@xchangeuk.com | www.xchangeuk.com

Frontline AS | Moss (Norway) | Phone +47 69 91 27 00 | sales@frontline.no
www.frontline.no

Pluggin.se | Storvreta (Sweden) | Phone +46 018-31 57 04
oscar.yngwe@pluggin.se | www.pluggin.se

VENUS INFOTECH | Mumbai (India) | Phone +91.98200 98906
venusinfotech@vsnl.net