

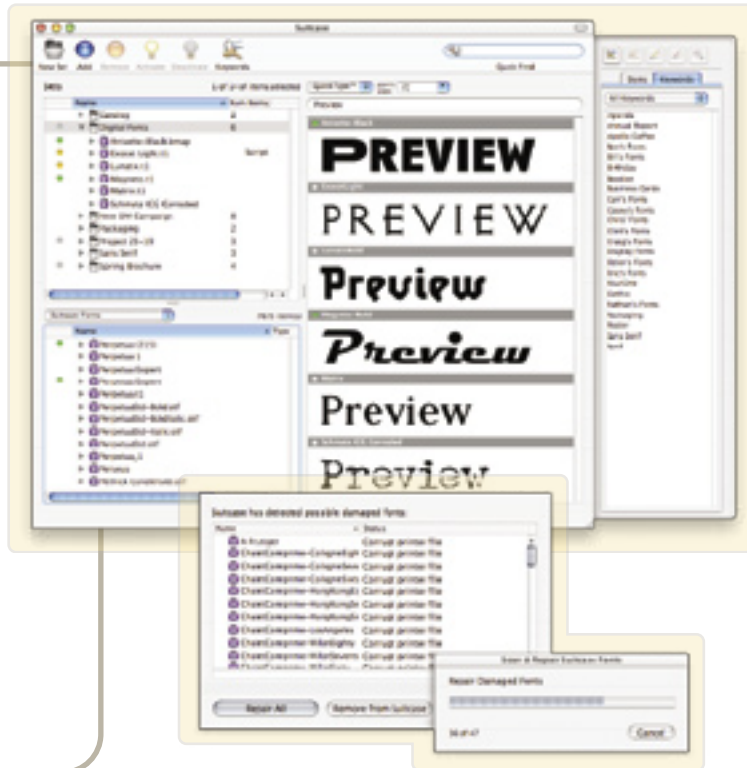
Suitcase X1

The ultimate font manager Suitcase X1 is the professional-level font management solution for Mac OS X. With unmatched font preview options, auto-activation and more, Suitcase is an integral part of the creative professional workflow and a must-have application for serious font users.

Why Suitcase?

Whether working on your own or as part of a larger workgroup, creative professionals who work regularly with fonts need a professional-level font management solution.

The difficulties of working with numerous fonts can seriously slow down, even halt, your workflow. Suitcase is the all-in-one solution to these problems and more. Suitcase allows you to manage all your fonts from one, intuitive window, while working hard in the background to ensure that you always have the font you need when you need it.



Unmatched preview and activation options

Suitcase gives you the power to preview fonts several different ways without activating them.

With the flexibility to fit your workflow, Suitcase provides multiple font activation options, including the ability to activate fonts directly from the Preview Pane.

Handles duplicate and corrupt font issues

Suitcase takes on duplicate and corrupt font problems so you don't have to. Suitcase will scan fonts to see if they are corrupt and repair or warn you if they are. Suitcase will also report any duplicate fonts in your database and give you an easy method to remove them.

Font management for workgroups

If you need to share fonts in a workgroup environment, Suitcase Server is the answer. Suitcase Server combines the smart, easy-to-use features of Suitcase X1 with a powerful set of administration tools to provide efficient client/server font management.

Auto-activate fonts

Save time by letting Suitcase auto-activate your fonts for you. Suitcase provides global auto-activation for the most popular Mac OS X applications, as well as auto-activation plug-ins for Adobe® applications and for QuarkXPress™.

Find your desired font in a flash

Suitcase's new QuickFind feature can instantly find the font you need based on its name, style or keyword. Or use the customizable Find command to locate a font based on more specific criteria.

For more information on Extensis solutions, please visit our website or contact Extensis direct.

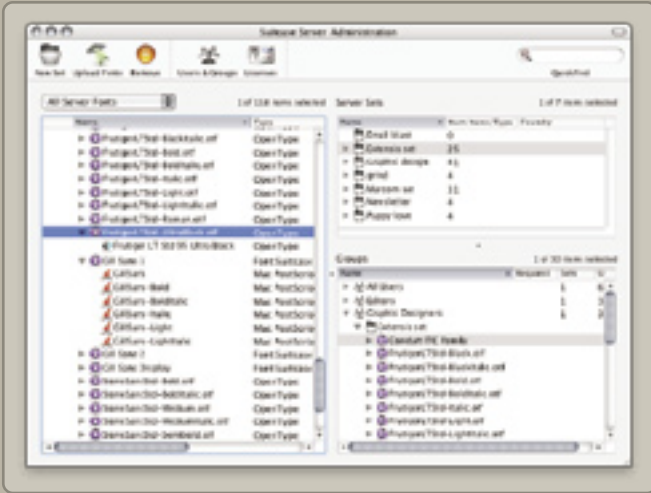


Extensis
a celartem company

online www.extensis.com

North America: 1.800.796.9798 | Europe: +44 (0) 1604 636 300

Suitcase Server



The ultimate font manager for workgroups

Suitcase Server combines the control you want with the ease of use you need. Control access to users and groups, maintain font license compliance, and ensure consistent font use amongst workgroup members.

Control local access to fonts and features

A major problem for network administrators is trying to keep rogue or non-approved fonts out of their system. Suitcase Server addresses this problem by giving administrators the ability to control a local user's access to fonts and certain client features. Administrators can control these settings on a per-user basis.

Font license tracking

Suitcase Server helps you stay in compliance by tracking font licenses and warning administrators if the number of users given access to a particular font exceeds the license.

Cross-platform administration

Suitcase Server runs on both Windows and Mac OS X server platforms. The new administration application is built directly into the Suitcase application for both Macintosh and Windows, so administrators can control the Server from any Macintosh or Windows computer. With support for OpenType fonts, Suitcase Server is also the ideal solution for workgroups with a cross-platform workflow. Users of Suitcase for Macintosh or Suitcase for Windows can both connect to the new Suitcase Server.

Users and groups

Administrators now have the capability to create individual users and assign them to a specific group or groups. Administrators can therefore control permissions and access to the fonts on the server.

Continuous updating

Suitcase Server allows for continuous updating so workgroup members will always be able to keep up with any changes made on the server. Changes made by an administrator to font sets will appear almost instantly to the users who have access to those fonts.



System Requirements

Suitcase X1 Client/Standalone		Suitcase Server
Macintosh	Windows	Macintosh
<ul style="list-style-type: none">• Mac OS X 10.2.8 and higher• 128 Megabytes of RAM• 30 Megabytes of hard disk space + space for font library	<ul style="list-style-type: none">• Windows 2000 Pro, Windows XP Home, Windows XP Pro• 128 Megabytes of RAM• 8 Megabytes of hard disk space + space for font library	Windows <ul style="list-style-type: none">• Mac OS X and Mac OS X Server 10.2.8 and higher• 128 Megabytes of RAM (256 MB Recommended)• 30 Megabytes of hard disk space + space for font library
		<ul style="list-style-type: none">• Windows 2000 Pro (SP1 or higher), Windows XP Pro, Windows 2000 Server (SP3 or higher), Windows Server 2003• 128 Megabytes of RAM (256 MB Recommended)• NTFS formatted volume• 30 Megabytes of hard disk space + space for font library

System requirements are subject to change. For the most current system requirements for this product, please visit <http://www.extensis.com/productinfo>.